



GREAT MASSINGHAM CHURCH OF ENGLAND PRIMARY SCHOOL
Weasenham Road, Great Massingham, King's Lynn. PE32 2EY

Headteacher: Ann Beardall Tel: 01485 520362

Website: www.greatmassingham.norfolk.sch.uk

NEWSLETTER JUNE/JULY 2017

Sadly, It's Time to Say Goodbye

We will be saying goodbye to Mrs Griffin at the end of term. She has been at Great Massingham for 4 years and we are very grateful to her for all that she has done for our school. We wish her all the best for the future.



Year 6's last day at primary school was on Friday 7th July as they take part in early transition days at High School from Monday 10th July.



Their Leavers' Service on 4th July was brilliant! We are sorry to see such talent leave our school. We wish them all every success in the future.

STAFFING FROM SEPTEMBER 2017

Class 1

Teaching Staff

Mrs Hall — all week except Tues AM

Mrs Kirsten Stibbon — Tuesday morning

Support Staff

Mrs Susan Rouse — Monday, Tuesday am, Wednesday all day and Friday all day.

Mrs Lucy Brown and Mrs Dawn Kitney — all day Thursday and part time one-to-one support all other days

Mr Lee Lilley — all week

Class 2

Teaching Staff

Mrs Cross — all week except Thurs AM

Mrs Frere-Smith — Mon, Tues, Wed mornings

Mr Watling — Thursday all day

Support Staff

Mrs Frost — all week

In addition, Mrs Susan Wood, will continue to work across both classes on Tuesday afternoons as SENDCo support, assisting Mrs Beardall with SEND admin paperwork and delivering intervention group work. Denise, Liz and Sarah will share the MSA duties across the week.

School will close for the summer holiday on Friday 21st July at **2.30pm** and reopen at 8.45am on Wednesday 6th September.



ATTENDANCE

Our target is 96%.

Our attendance from September 2016 = 95.9%.

UNIFORM

Our uniform suppliers are Wovina and Tesco – www.wovina.com and www.tesco.com/ues. Postage is free for orders over £20 from Wovina and Tesco orders can be delivered to store free of postage. Uniform can still be ordered from Schoolwear for Less (www.schoolwearforless.com) if preferred.

The Governing Body request that all children attending Great Massingham School support its positive image in the community by wearing school uniform and having appropriately coloured/styled hair. The wearing of nail polish and tattoo transfers is discouraged as it can be distracting for pupils. Girls and Boys must have long hair tied and/or clipped back for health and safety reasons.

Great Massingham uniform consists of

- navy sweatshirt/cardigan or jumper with or without logo,
- navy polo shirt,
- black or grey trousers/skirts/pinafore dresses or shorts,
- Girls may wear a blue and white checked dress in warm weather.

School shoes (**not trainers**) should be black or brown and, for safety reasons, strappy or high-heeled sandals/shoes must not be worn.

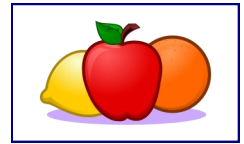
In winter/wet weather pupils who come to school wearing boots should change into indoor shoes or plimsolls in school.

Jewellery should not be worn - this includes loom bands, wristbands etc. with the exceptions of small stud earrings, wristwatches and attendance award wristbands. If wristwatches are worn, it is at the wearer's own risk. The school is not responsible for their damage or loss. For safety reasons children must remove watches and earrings for PE. Children should remove and be responsible for their own earrings. If your child is unable to do this please remove earrings at home before school on PE days.

Please ensure all clothing and belongings are clearly named so that lost property can be identified and returned.

HEALTHY SCHOOL LUNCHES

School meals are now prepared in line with new DfE Food Standards for Schools.



To support this legislation schools are expected to encourage healthy eating in packed lunches brought in by pupils not taking a hot midday meal.

Packed lunches may include sandwiches, fruit, vegetables, yoghurts, cheese, salad, etc but should NOT include sweets or chocolate bars or fizzy drinks. (A chocolate biscuit or cake is acceptable).

If you have any concerns about this issue please come in and speak to a member of staff. Obviously it is important that children eat well at lunchtime so packed lunches should contain things children enjoy eating but we ask that you help us meet Food Standards expectations. This is not intended to be school determining what parents feed their children - it is intended to inform you about the expectations on schools and ask for your support.



Thank you to volunteers Julian, Joyce and Barbara (Freddie's gran) for helping Class 1 with the school garden.

Thank you to Nancy Kellogg for her help with the Y6 Book Club.



Thank you to Chris Davison for running the school library again this year.



And thank you to all who helped on visits and our swimming helpers.



UNIVERSAL INFANT FREE SCHOOL MEALS

Children in Class 1 will continue to be eligible for a free school meal each day. They can order a hot meal, a jacket potato or a packed lunch. The Autumn/Winter Menu and the Packed Lunch Menu for the Autumn Term are attached.



VOLUNTEERING IN SCHOOL

We really need people to help in school to hear children read, organise resources, and work with small groups, help on visits, etc. Parents, relatives, friends and neighbours are all welcome! It's a great way to get involved in the school community and your child/children's learning. If you can help in school, either on a regular basis or from time to time, please telephone or e-mail the school or speak to a member of staff at the end of a school day. To ensure safeguarding all adult helpers in school will be DBS checked. Mrs Smith will carry out the check – it is a relatively simple online process that just requires valid I.D. documents being brought into school.

Thank you to ALL our regular helpers - you really make a difference and it is appreciated by everyone in school.

ANNUAL PARENTS QUESTIONNAIRE

Thank you to all parents who completed a questionnaire this year. The Governing Body met to discuss the outcomes from it. Please find attached their letter of response.



FEEDBACK

Our focus topic is THE SCHOOL YEAR 2016-2017 Please use this slip to pass on your views - or e-mail to office@greatmassingham.norfolk.sch.uk. Is there a topic or subject your child/children have particularly enjoyed or a visit or activity that has gone well? What could we do to improve our provision for next year? Please feel free to feedback to us on any school issues. Your opinions and ideas matter to us so do have your say! You can also let OFSTED and the wider world know what you think about the school at any time by logging on to the link below.

<https://parentview.ofsted.gov.uk/user>

EMERGENCY UPDATE FORMS AND PERMISSIONS SLIPS FOR SEPTEMBER 2017

We would be grateful if you could update and return the enclosed Emergency Data Sheet to school as soon as possible as Mrs Smith would like to update our school management system before the end of term.

Please also sign and return the permission slips to school before **Friday 14th July**. Thank you.

HOLIDAY DATES

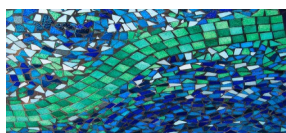
We have attached the Norfolk County Council Schools' Term Dates Calendar for 2017-18 academic year.

PLAYGROUND IMPROVEMENTS

The children were lucky enough to take part in an art workshop with Carolyn Ash, a



local mosaics artist. The completed art work will be displayed on the outside school wall as part of our drive to brighten up the front playground.



We would really like to thank Emma Pearson — who ran 100 miles in May to raise over £500 for the playground improvements fund.

Following the children's visit to Mrs Flower's to celebrate her 100th birthday the family kindly donated £100. The cost of the mosaic workshop has been met from Emma's fundraising and Mrs Flower's donation.

BOOK QUIZ

Well done to our team of four Year 6 children (Hannah, Ruby, Ieuan and Jake) for winning the Cluster Book Quiz on 15th June.

PE KIT

Please make sure children have PE kit in school everyday next term. PE kit consists of: White Polo shirt or white T Shirt with or without logo, Navy/black shorts and a tracksuit.

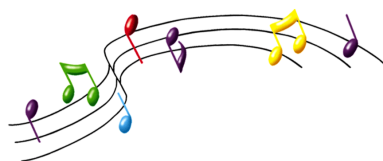
EXTRA-CURRICULAR MUSIC

LESSONS

Do you have a budding rock star or future concert pianist at home?

We are lucky enough to have Steff Judd come into school every Friday morning to provide music tuition and Benjamin Howell come in on Thursday after school to provide piano lessons.

Anyone interested in Drum, Guitar or Piano lessons should speak to Mrs Smith in the school office for details.



PFA

Thank you to our PFA for funding the visit to the Theatre Royal in Norwich to see Fantastic Mr Fox and for organizing the Fun Afternoon on 5th July.



SAINSBURY VOUCHERS

We have collected 2,575 Sainsbury Vouchers and have ordered cooking equipment for the school.



FEEDBACK FORM

PLEASE LET US HAVE YOUR VIEWS ON:-

The School Year 2016-17

What has gone well? What do you feel we could improve?

OR ANY OTHER SCHOOL ISSUE

Signed:

Print Name: